

Encore FR Pro WW



Light Efficiency:

29 Lumen/Watt

Light Quality:

CRI: 97.3

Color Temperature:

3056 K

Output: 8035 lm

Peak: 245558 cd

Power: 272.6 W

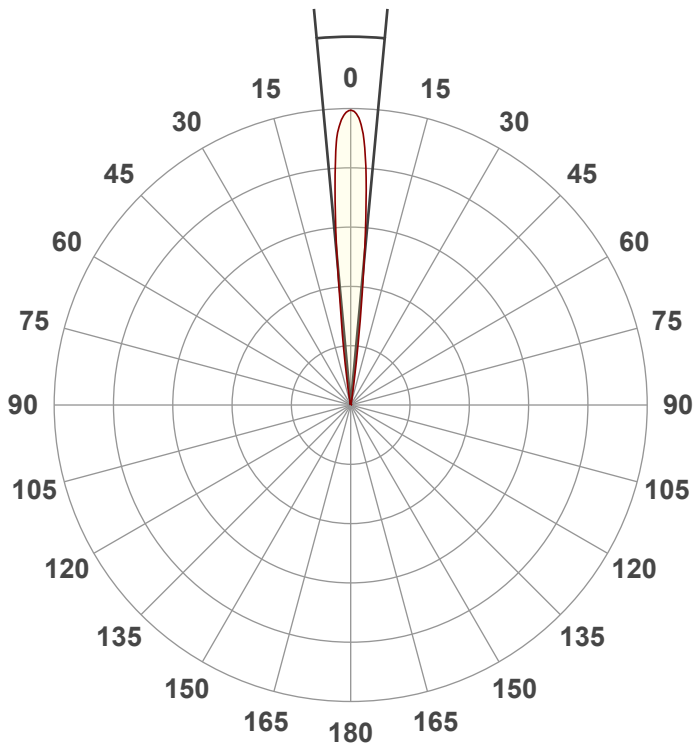
PF: 0.98

Rotating 4-Leaf
Barn Door



Beam Angle

10.6°



Test:

Zoom In

Date:

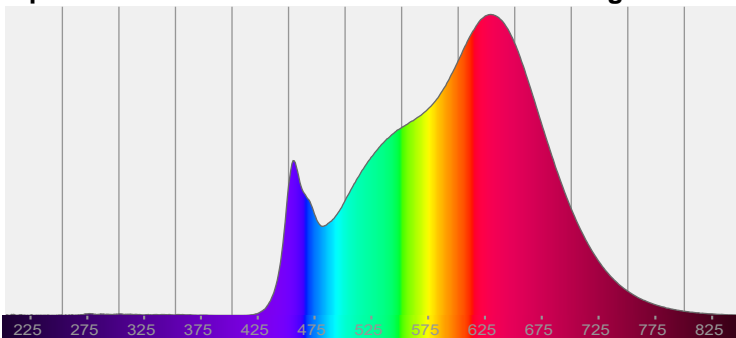
9/2/2022

Note:

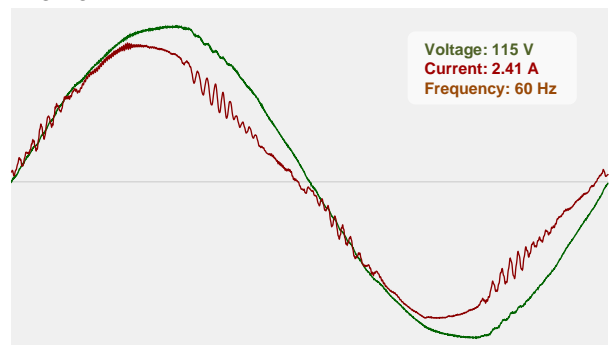
CIE 1931
x: 0.433
y: 0.403

Spectra

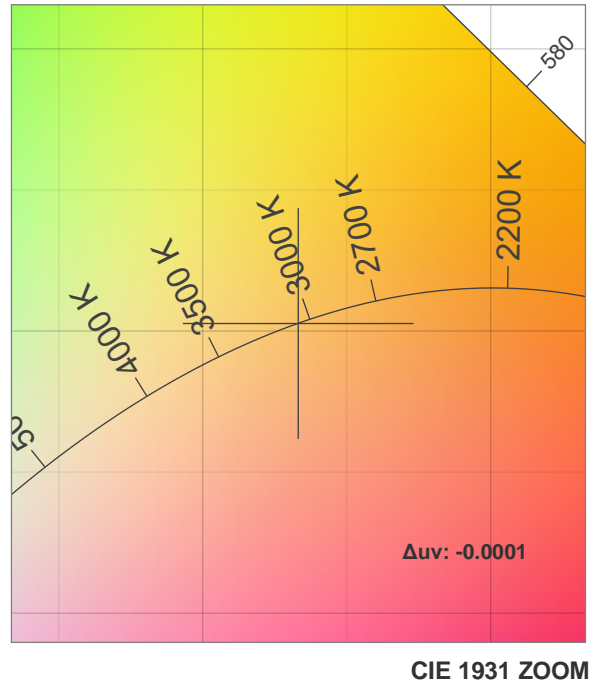
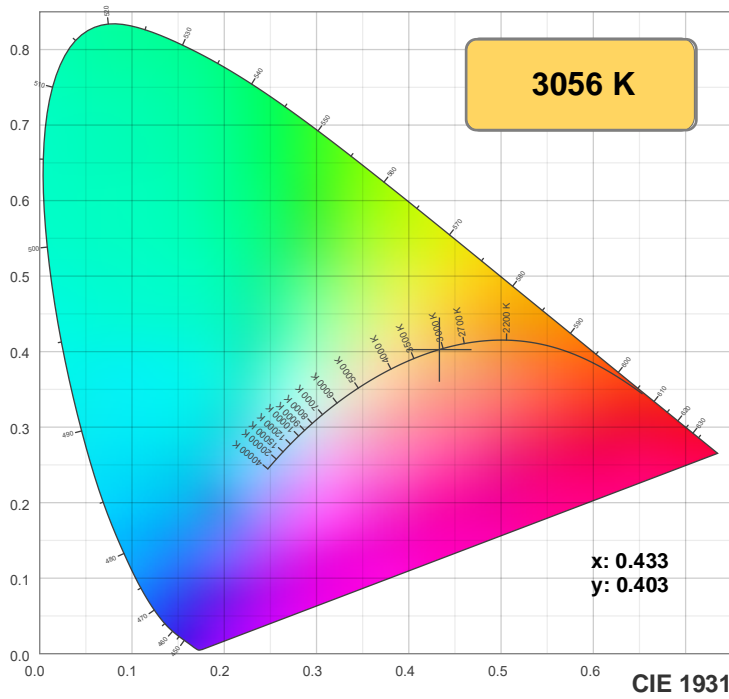
Dominant Wavelength: 583nm



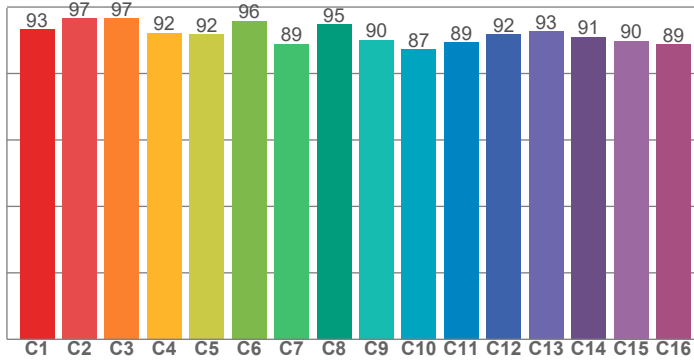
Power



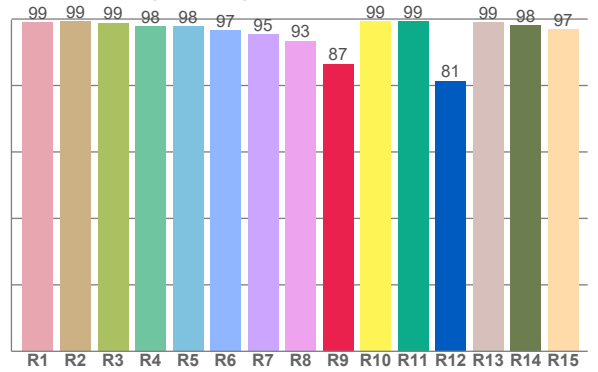
Color Details



TM30: 92.1



CRI: 97.3 (R1-R8)



CRI R values, only R1-R8 are used to calculate final CRI value

R1	R2	R3	R4	R5	R6	R7	R8	R9	R10	R11	R12	R13	R14	R15
98.9	99.2	98.9	97.9	97.8	96.7	95.5	93.4	86.5	99.3	99.3	81.4	99.1	98.2	97.0

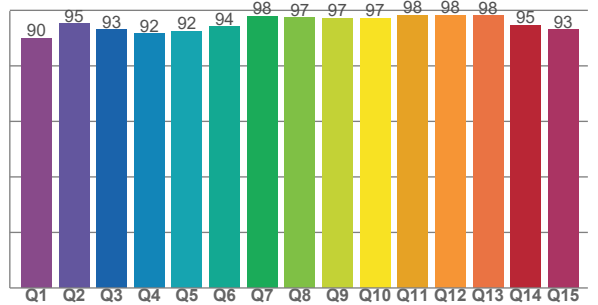
TM30 C values, 16 binned values out of total of 99 C values

C1	C2	C3	C4	C5	C6	C7	C8	C9	C10	C11	C12	C13	C14	C15	C16
93.3	96.6	96.6	92.2	91.8	95.8	88.9	94.7	90.1	87.3	89.4	91.7	92.7	91.1	89.8	88.8

CQS Q values

Q1	Q2	Q3	Q4	Q5	Q6	Q7	Q8	Q9	Q10	Q11	Q12	Q13	Q14	Q15
89.9	95.3	93.1	91.5	92.5	94.1	97.9	97.3	97.2	97.2	98.3	98.3	98.1	94.6	93.1

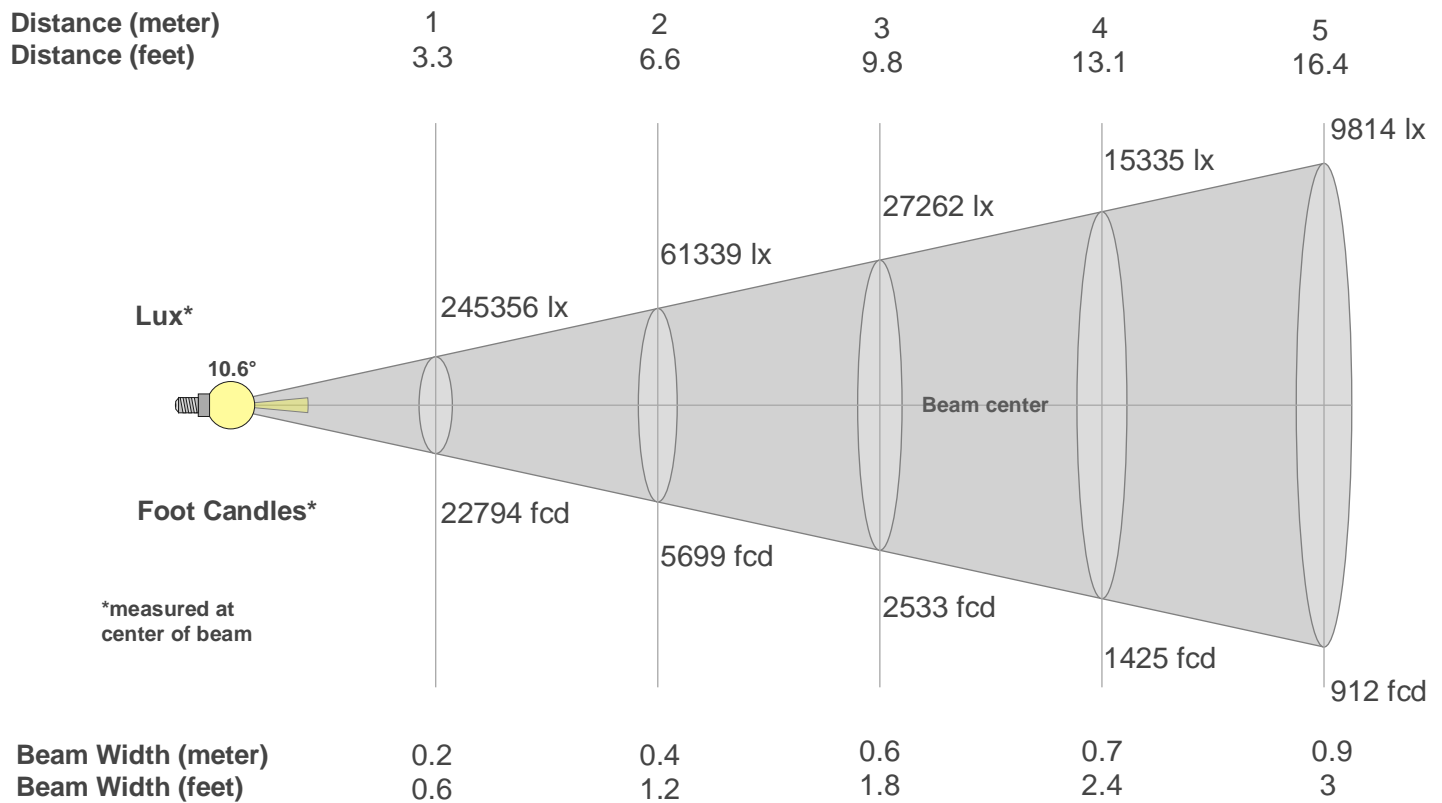
CQS: 94.3



Color Parameters

Color Temperature	Color Rendering Index	Red Component	Color Fidelity	Color Gamut	Color Quality Scale	Color Coordinate CIE 1931	Color Coordinate CIE 1931	Color Coordinate	Color Coordinate	Color Deviation from Black Body
CCT	CRI	CRI R9	TM30 Rf	TM30 Rg	CQS	x	y	u	v	Δuv
3056 K	97.3	86.5	92.1	98.4	94.3	0.433	0.403	0.249	0.347	-0.0001

Beam Details



Beam Intensities from 1-20m

m	1	2	3	4	5	6	7	8	9	10	11	12	13	14	15	16	17	18	19	20
ft	3.3	6.6	9.8	13.1	16.4	19.7	23	26.2	29.5	32.8	36.1	39.4	42.7	45.9	49.2	52.5	55.8	59.1	62.3	65.6
lx	245356	61339	27262	15335	9814	6815	5007	3834	3029	2454	2028	1704	1452	1252	1090	958	849	757	680	613
fcd	22794.3	5698.6	2532.7	1424.6	911.8	633.2	465.2	356.2	281.4	227.9	188.4	158.3	134.9	116.3	101.3	89	78.9	70.4	63.1	57

Intensities in 0° C-plane

0°	1°	2°	3°	4°	5°	6°	7°	8°	9°	10°	11°	12°	13°	14°	15°	16°	17°	18°	19°
245K	243K	236K	221K	186K	139K	83K	51K	27K	15K	7K	3K	2K	1K	1K	1K	0K	0K	0K	0K
100%	99%	96%	90%	76%	57%	34%	21%	11%	6%	3%	1%	1%	0%	0%	0%	0%	0%	0%	0%

Intensities in 90° C-plane

0°	1°	2°	3°	4°	5°	6°	7°	8°	9°	10°	11°	12°	13°	14°	15°	16°	17°	18°	19°
245K	243K	236K	221K	186K	139K	83K	51K	27K	15K	7K	3K	2K	1K	1K	1K	0K	0K	0K	0K
100%	99%	96%	90%	76%	57%	34%	21%	11%	6%	3%	1%	1%	0%	0%	0%	0%	0%	0%	0%

Intensities in 180° C-plane

0°	1°	2°	3°	4°	5°	6°	7°	8°	9°	10°	11°	12°	13°	14°	15°	16°	17°	18°	19°
245K	243K	235K	217K	185K	138K	89K	49K	23K	12K	6K	3K	2K	1K	1K	1K	0K	0K	0K	0K
100%	99%	96%	88%	75%	56%	36%	20%	9%	5%	2%	1%	1%	0%	0%	0%	0%	0%	0%	0%

Intensities in 270° C-plane

0°	1°	2°	3°	4°	5°	6°	7°	8°	9°	10°	11°	12°	13°	14°	15°	16°	17°	18°	19°
245K	243K	235K	217K	185K	138K	89K	49K	23K	12K	6K	3K	2K	1K	1K	1K	0K	0K	0K	0K
100%	99%	96%	88%	75%	56%	36%	20%	9%	5%	2%	1%	1%	0%	0%	0%	0%	0%	0%	0%

Beam Angle 50%	Field Angle 10%	Cutoff Angle 2,5%	Intensity Ratio in 120° Cone	Intensity Ratio in 90° Cone
10.6°	16°	20.1°	100.0%	100.0%